

WRITE BRAIN™ & ESSER FUNDS

www.WriteBrainWorld.com
855.WB.WORLD (855.929.6753)
EDUPROGRAM@WRITEBRAINWORLD.COM

WRITE BRAIN CEO: Meredith Scott Lynn
meredith@writebrainworld.com • 323.314.4247

Let's face it...

The past two school years have been beyond challenging for students, teachers, support staff, and even parents. The good news is, with the passage of the American Rescue Plan, all districts and schools have access to much-needed funding to help address the academic and social-emotional needs of all students.

Below we've outlined a few ways that you can fulfill your ESSER (Elementary and Secondary School Emergency Relief) fund requirements with WRiTE BRAiN's programs, curricula, professional development opportunities, and family engagement plans.

Reach out to us to customize a quote that meets your learning community's specific needs!

Addressing Long-Term School Closure

In response to long-term school closures during Covid times, ESSER funds can be directed toward:

- Planning for, coordinating, and implementing activities during long-term closures, including [...] technology for online learning [...] and ensuring other educational services can continue to be provided consistent with all applicable requirements.

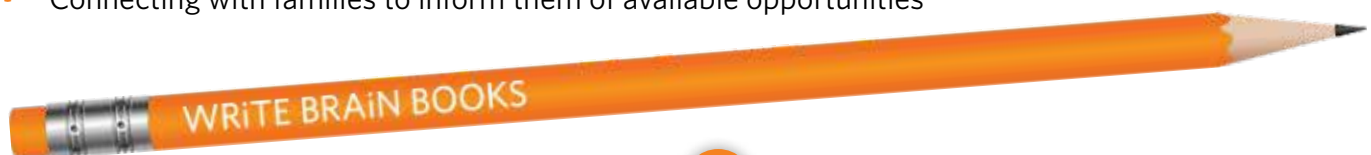
WRiTE BRAiN Offerings

- DiGiTAL ELA, ELD & SEL Program (for use onsite and online)
- Published Authors Kit Program (for use onsite and online)
- Community Published Authors (Level 3 & 4 ELs)
- Customized Professional Development experiences to address virtual teaching and learning needs

Addressing Learning Loss

Twenty percent of funds received in the third round of ESSER funding (via the American Rescue Plan Act) must go toward activities aimed at combatting learning loss, such as:

- Providing summer and after-school learning and enrichment opportunities
- Addressing the needs of low-income students, English learners, and migrant students
- Improving student attendance and engagement
- Connecting with families to inform them of available opportunities



WRiTE BRAiN Offerings

- All-Inclusive Published Authors Program for After School
- Published Authors Kit Program (for Summer and shorter timelines)
- Community Published Authors
- Sensational EL Storybuilders Program
- Newcomer & Emergent EL Program
- Stellar S.E.L. Programs (Poetry, Improv, Rap, Journaling)
- Customized Family Engagement experiences



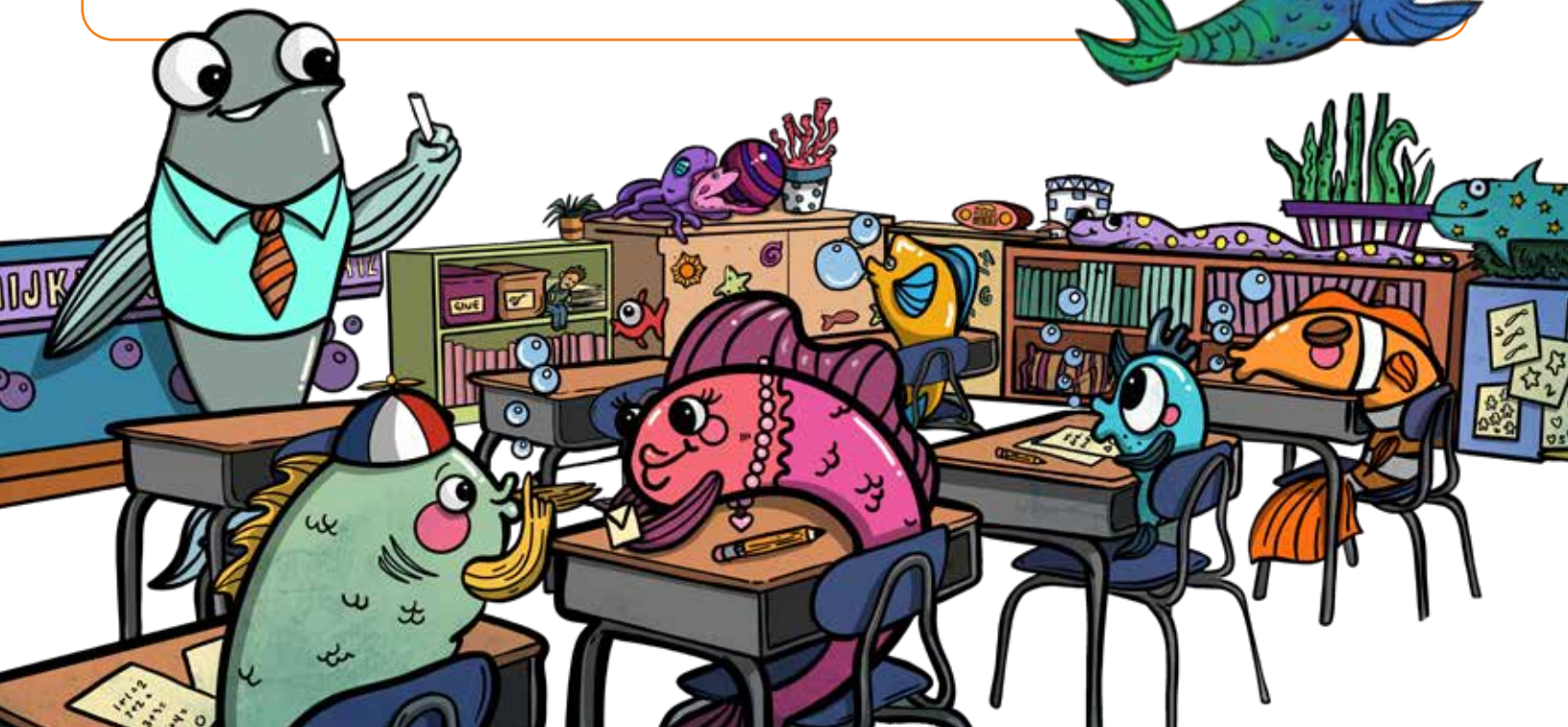
Mental Health Support

Schools may use ESSER funds to support students' mental health by:

- Implementing evidence-based programs to support social and emotional learning, resilience, and trauma sensitivity

WRiTE BRAiN Offerings

- Published Authors Programs for In School, Afterschool and Summer
- C12 Wheel Works S.E.L. Program
- S.E.L. Playbooks
- Stellar S.E.L. Programs (Poetry, Improv, Rap, Journal Jam)
- Customized SEL-focused Professional Development



FUN, DISGUISED PBL & SEL PROGRAMS

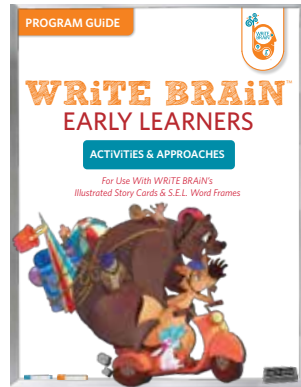
PRE-K

PRIMARY

ELEMENTARY

MIDDLE

HIGH



**Scripted Facilitator Guides
and High-Quality Materials
and Resources for Easy
Implementation!**

